

■ Note: When specifying/ordering grates, refer to "Choosing the Proper Inlet Grate" on pages 125-126.  
 For a complete listing of FREE OPEN AREAS and WEIR PERIMETERS of all NEENAH grates, refer to pages 327-332.

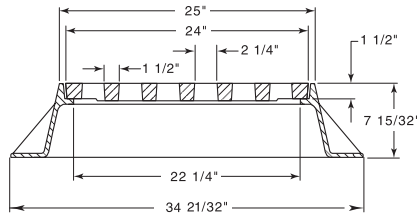
## R-2500 Inlet Frame, Grate

Heavy Duty

CATALOG NUMBER	GRATE TYPE	SQ. FT. OPEN	WEIR PERIMETER LINEAL FEET
R-2500	H	0.9	6.2

Non-Rocking feature available, see p. 12.

Available Lid: **R-1670-A**



## R-2501 Inlet Frame, Grate

Heavy Duty

CATALOG NUMBER	GRATE TYPE	SQ. FT. OPEN	WEIR PERIMETER LINEAL FEET
R-2501	G	1.1	6.8
R-2501	A	1.1	6.8
R-2501	C	1.2	6.8
R-2501	F	1.4	6.8

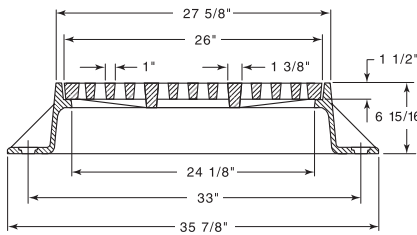
Furnished with four 1" anchor holes on 33" diameter bolt circle.

Standard Grate (shown): Type G

Alternate Grate(s):



Available Lid: **R-1642**



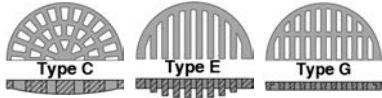
## R-2502 Inlet Frame, Grate

Heavy Duty

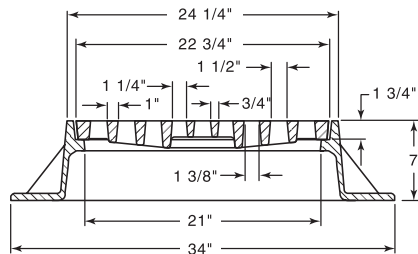
CATALOG NUMBER	GRATE TYPE	SQ. FT. OPEN	WEIR PERIMETER LINEAL FEET
R-2502	D	0.9	6.0
R-2502	G	1.3	6.0
R-2502	C	1.2	6.0
R-2502	E	1.5	6.0

Standard Grate (shown): Type D

Alternate Grate(s):



Available Lid: **R-1772**



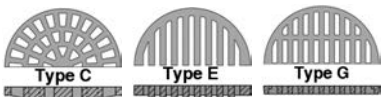
## R-2504 Inlet Frame, Grate

Heavy Duty

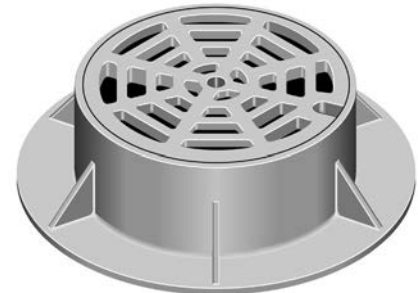
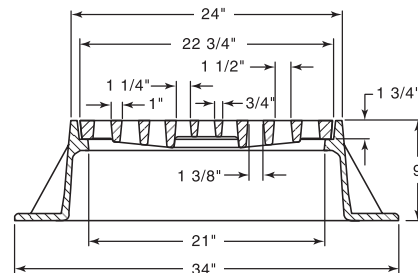
CATALOG NUMBER	GRATE TYPE	SQ. FT. OPEN	WEIR PERIMETER LINEAL FEET
R-2504	G	1.3	6.0
R-2504	D	0.9	6.0
R-2504	C	1.2	6.0

Standard Grate (shown): Type D

Alternate Grate(s):



Available Lid: **R-1772**



Supplied By:

**TRENCH DRAIN SUPPLY**

877-903-7246  
www.trenchdrainsupply.com